

Desso Textile floor covering - Tiles






The Floor is Yours

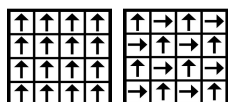
Menda

Specification according to EN 1307

| | | | | | | | | |
|--------------------------|------------------|---------------------------------------|--|--------------------|--------|------|------|------|
| Type of manufacture | ISO 2424 | Tufted 1/10 " | | | | | | |
| Aspect | ISO 2424 | Loop pile | | | | | | |
| Dye method | | Solution dyed | | | | | | |
| Dimensions | EN 994 | cm x cm | 50 x 50 / 19.68" x 19.68" (20 tiles per box) | | | | | |
| Primary backing | ISO 2424 | Polyester - polyamide fleece | | | | | | |
| Secondary backing | ISO 2424 | Modified bitumen Polyver® - Polyscan® | | | | | | |
| Pile fibre composition | ISO 2424 | BCF Polyamide 6.6 | | | | | | |
| Total thickness | ISO 1765 | mm | 6.0 | inch | 0.24 | | | |
| Effective pile thickness | ISO 1766 | mm | 2.6 | inch | 0.10 | | | |
| Total mass | ISO 8543 | g/m ² | 4100 | oz/yd ² | 121.0 | | | |
| Total pile mass | ISO 2424 | g/m ² | 585 | oz/yd ² | 17.3 | | | |
| Effective pile mass | ISO 8543 | g/m ² | 400 | oz/yd ² | 11.8 | | | |
| Pile density | ISO 8543 | g/cm ³ | 0.155 | lb/in ³ | 0.0056 | | | |
| Number of tufts | ISO 1763 | /dm ² | 1700 | /yd ² | 142137 | | | |
| Stroll test | ISO 6356 | kV | ≤ 2.0 | | | | | |
| Vertical resistance | ISO 10965 | Ohm | ≤ 1 x 10 ⁹ | | | | | |
| Horizontal resistance | ISO 10965 | Ohm | ≤ 1 x 10 ⁹ | | | | | |
| Use classification | EN 1307 | 33 Commercial - heavy use | | | | | | |
| Luxury rating | EN 1307 | LC 2 | | | | | | |
| Dimensional stability | EN 986 | % | ≤ 0.20 | | | | | |
| Sound absorption | ISO 354 | Freq. Hz | 125 | 250 | 500 | 1000 | 2000 | 4000 |
| | | | α _s | 0.01 | 0.03 | 0.08 | 0.24 | 0.31 |
| Noise reduction | ISO 354 | α _w | 0.16 | | | | | |
| Thermal resistance | ISO 8302 | m ² .K/W | 0.089 | | | | | |
| Flammability | EN 13501-1 | Bfl - s1 | | | | | | |
| Prodis-ID | www.pro-dis.info | A1E4CCFB | | | | | | |


 Manufactured by:
 Desso BV
 PO Box 169
 NL - 5140 AD Waalwijk
 EN 14041
 0493-CPD-0002



Desso flooring products are to be installed in full accordance with Desso's installation instructions and recognised trade standards. An effective, regular cleaning and maintenance programme is vital for retaining a high appearance level. Desso flooring products should only be used as floorcoverings. Note: Desso reserves the right to amend this specification without giving prior notice. For the latest versions of the technical specifications, visit www.desso.com



07-30-2010 UK